

NOT FOR
CONSTRUCTION
BID SET

INTERMEDIATE CARE FACILITY
HORIZON BEHAVIORAL HEALTH
RIVERVIEW ROAD, MADISON HEIGHTS, VIRGINIA

CN NO: 4533
DATE: 05/31/2013
DESIGN: KGD
DRAWN: DAR
REVIEW: DWR

REVISIONS

No.	Date	Description
1	6/12/13	ADDENDUM #1

TYPICAL
BUILDING FLOOR
PLAN - LIGHTING
AND POWER

EP101

SHEET 24 OF 25

GENERAL NOTES:

1. TYPICAL FLOOR PLANS ARE INDICATED FOR BUILDINGS A AND B. FLOOR PLANS INDICATED ARE FOR BUILDING A. BUILDING B IS THE MIRROR IMAGE OF BUILDING A. PROVIDE A COMPLETE INSTALLATION FOR BOTH BUILDINGS. SEE ALSO ES101 FOR RESPECTIVE BUILDING ORIENTATION.
2. COORDINATE FINAL DATA/TELEPHONE OUTLET LOCATIONS WITH OWNER.

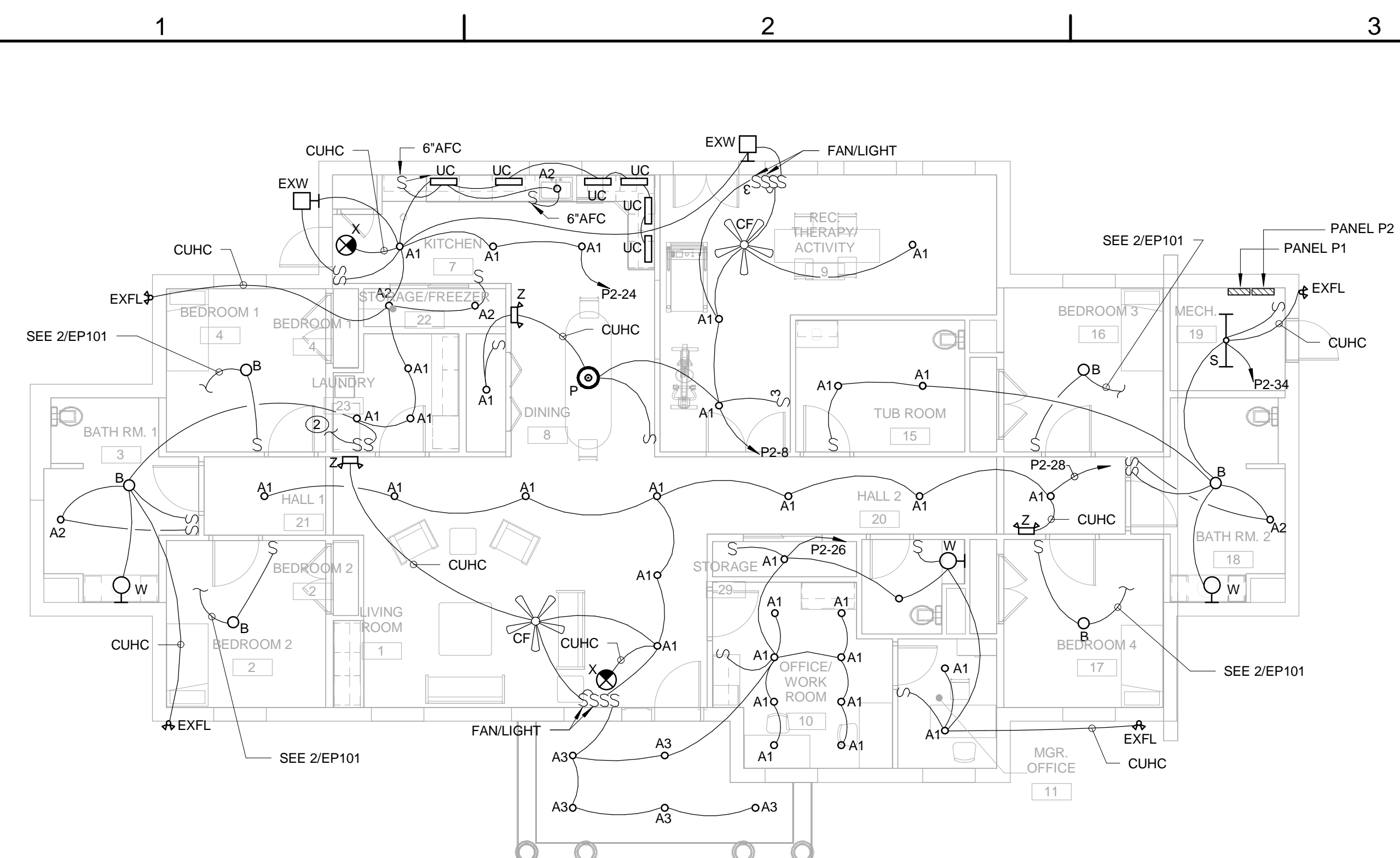
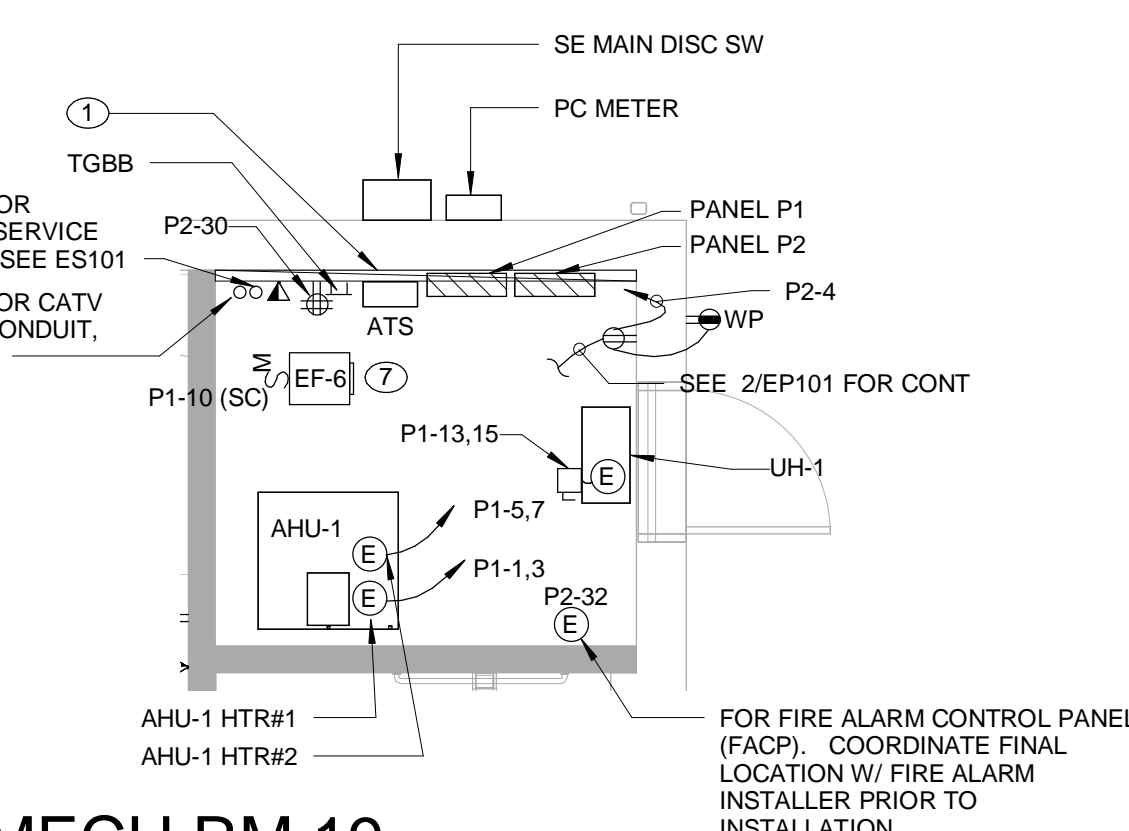
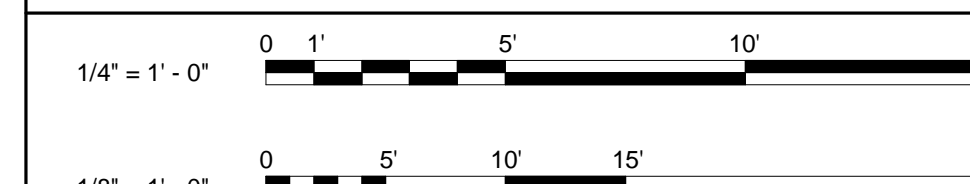
NOTES:

1. PROVIDE 8" HIGH X 3/4" DEEP FIRE TREATED PLYWOOD BACKBOARD WITH LENGTHS AS SHOWN.
2. PROVIDE (1) FIXTURE TYPE "S" IN ATTAC SPACE ABOVE. SWITCH SHALL CONTROL ATTIC LIGHT. PROVIDE CONNECTION TO POWER VIA LIGHTING BRANCH CIRCUIT SERVING LAUNDRY ROOM.
3. PROVIDE ELECTRICAL CONNECTION TO AUTOMATIC DOOR OPENER AND DOOR STATIONS. COORDINATE WITH EQUIPMENT SUPPLIER.
4. RUN CIRCUIT THROUGH TIMER IN OFFICE 10. COORDINATE REQUIREMENTS WITH DOOR HARDWARE SUPPLIER.
5. COORDINATE HEIGHT OF RECEPTACLE AND OUTLETS WITH TV.
6. JUNCTION BOX WITH CONDUIT STUBBED UP ABOVE CEILING FOR DOOR TIMER. MOUNT 6" ABOVE COUNTER.
7. RUN CIRCUIT TO EXHAUST FAN THROUGH THERMOSTAT PROVIDED WITH FAN. COORDINATE EXACT LOCATION OF THERMOSTAT WITH MECHANICAL CONTRACTOR.
8. PROVIDE 24-PORT PATCH PANEL FOR DATA CABLE TERMINATION AND TYPE 66 BLOCKS FOR PHONE CABLE TERMINATION. PROVIDE 10-PAIR CAT6 CABLE BETWEEN TYPE 66 BLOCKS AND TELEPHONE BACKBOARD IN ROOM 19.

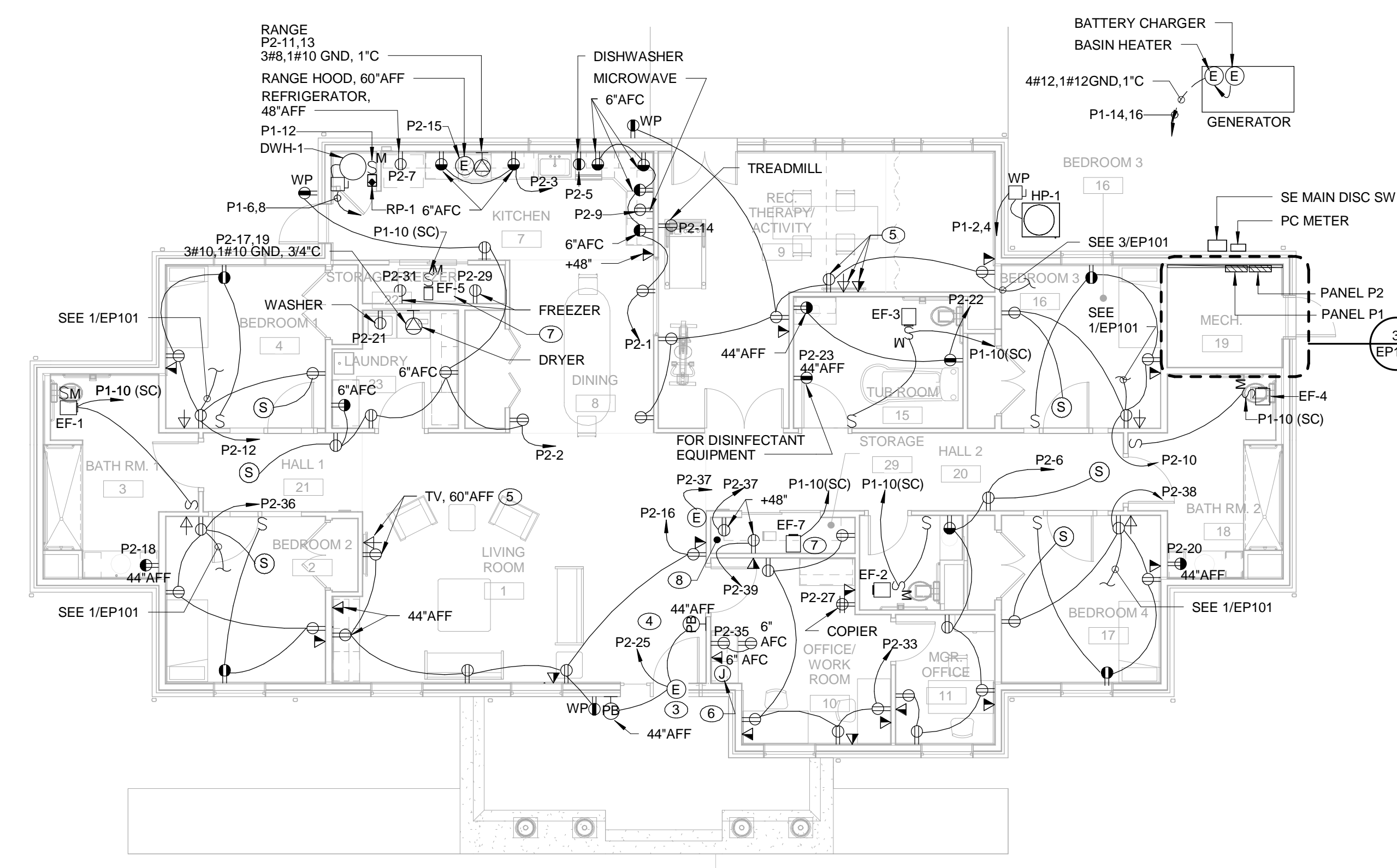
MECH RM 19

EP101 1/4" = 1'-0"

GRAPHICAL SCALES



1 TYPICAL FLOOR PLAN FOR BUILDING A AND B - LIGHTING
EP101 1/8" = 1'-0"



2 TYPICAL FLOOR PLAN FOR BUILDINGS A AND B - POWER AND SYSTEMS
EP101 1/8" = 1'-0"